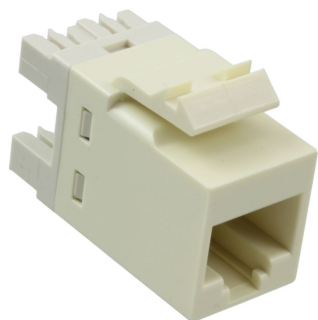


1375191-1



RJ45 Modular Jack, SL Series, Category 5e, unshielded, without dust cover, light almond

Product Classification

Regional Availability

Asia | Australia/New Zealand | EMEA | Latin America | North America

Portfolio

CommScope®

Product Type

Modular jack

Product Series

SL Series

General Specifications

ANSI/TIA Category

5e

Cable Type

Unshielded

Color

Almond

Conductor Type

Solid | Stranded

Integrated Dust Cover Type

None

Mounting

SL Series faceplates and panels

Mounting Note

Color matches with SL-style Almond Faceplates and Surface Mount Boxes

Outlet Type

Standard

Termination Punchdowns, minimum

200 times

Termination Tool

SL Termination tool

Termination Type

IDC

Transmission Standards

ANSI/TIA-568-C.2 | ISO/IEC 11801 Class D

Wiring

T568A | T568B

Dimensions

Panel Cutout, recommended

14.78 x 20.07 mm (0.58 x 0.79 in)

1375191-1

Panel Thickness, recommended	1.6 mm 0.063 in
Height	16.26 mm 0.64 in
Width	14.48 mm 0.57 in
Depth	30.48 mm 1.2 in
Compatible Insulated Conductor Diameter, maximum	1.45 mm 0.057 in
Contact Plating Thickness	1.27 µm
Compatible Conductor Gauge, solid	24–22 AWG
Compatible Conductor Gauge, stranded	26–24 AWG

Electrical Specifications

Remote Powering	Fully supports the safe delivery of power over LAN cabling described by IEEE 802.3bt (Type 4) and complies with the unmating under electrical load requirements prescribed by IEC 60512-99-002
Safety Voltage Rating	150 Vac

Material Specifications

Contact Base Material	Beryllium copper
Contact Plating Material	Gold
Material Type	Polycarbonate

Mechanical Specifications

Plug Insertion Life, minimum	750 times
Plug Retention Force, minimum	89 N 20.008 lbf

Environmental Specifications

Operating Temperature	-40 °C to +70 °C (-40 °F to +158 °F)
Flammability Rating	UL 94 V-0
Safety Standard	CSA cUL

Packaging and Weights

Included	Strain relief cap
Packaging quantity	1
Packaging Type	Bag

Regulatory Compliance/Certifications

Agency

CHINA-ROHS

REACH-SVHC

ROHS

**Classification**

Below maximum concentration value

Compliant as per SVHC revision on www.commscope.com/ProductCompliance

Compliant