

UniFi® | SECURITY GATEWAY

Enterprise Gateway Router with Gigabit Ethernet

Models: USG, USG-PRO-4

Advanced Security, Monitoring, and Management

Sophisticated Routing Features

Integrated with UniFi® Controller Software



UniFi® | SECURITY GATEWAY

Affordable Enterprise Network Security

Ubiquiti Networks introduces the UniFi® Security Gateway, which extends the UniFi Enterprise System to encompass routing and security for your network.

The UniFi Security Gateway combines reliable security features with high-performance routing technology in a cost-effective unit.

Two models are available:

- **USG-PRO-4** Rack-mountable form factor with fiber connectivity options and a dual-core, 1 GHz processor for maximum hardware-accelerated performance.
- **USG** Wall-mountable form factor with a dual-core, 500 MHz processor for standard hardware-accelerated performance.

Powerful Firewall Performance

The UniFi Security Gateway offers advanced firewall policies to protect your network and its data.

Convenient VLAN Support

The UniFi Security Gateway can create virtual network segments for security and network traffic management.

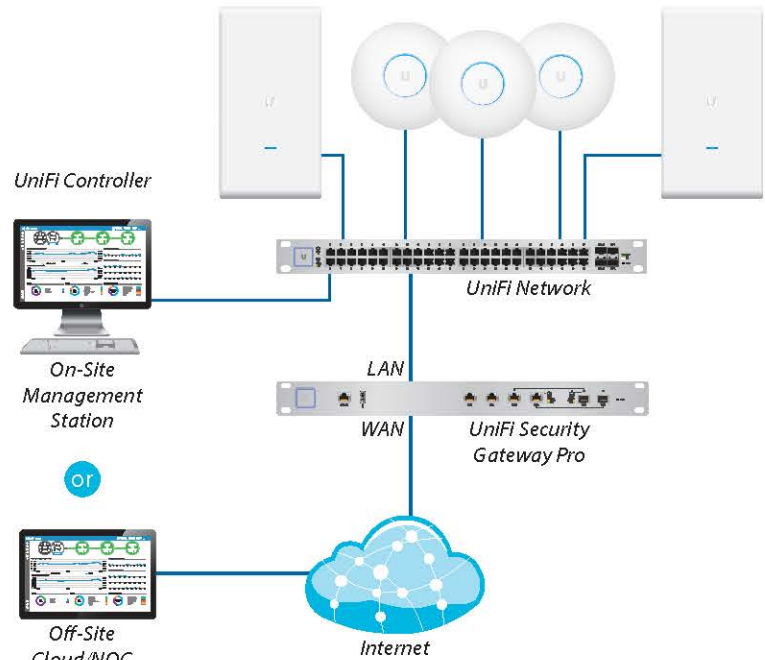
VPN Server for Secure Communications

A site-to-site VPN secures and encrypts private data communications traveling over the Internet.

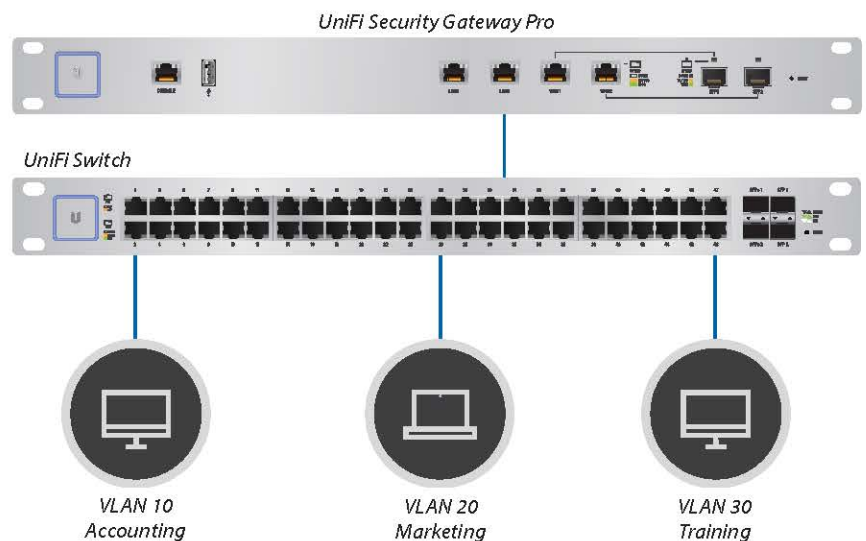
QoS for Enterprise VoIP and Video

Top QoS priority is assigned to voice and video traffic for clear calls and lag-free, video streaming.

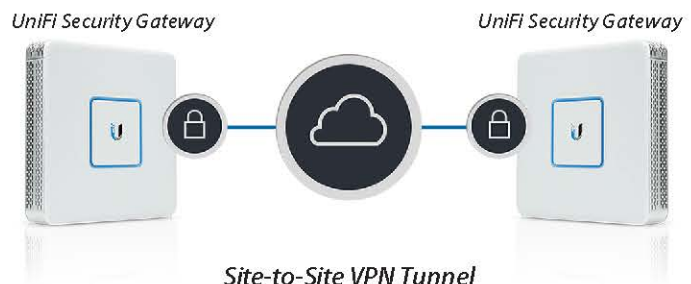
The UniFi Security Gateway is deployed in the same manner as UniFi Access Points for wireless networking. Use the intuitive UniFi Controller to conduct device detection, provisioning, and management.



Example of a UniFi Enterprise System



Network Segmentation with VLAN



Site-to-Site VPN Tunnel

UniFi Controller

Introducing the new UniFi Controller software featuring a refreshed UI and support for the next generation of UniFi devices.

Improved User Experience

Redesigned to be more intuitive and easier to navigate, the new UI raises the bar for enterprise network management efficiency. Important network details are logically organized for a simplified, yet powerful, interface.

Packed with Features

Use the UniFi Controller to provision thousands of UniFi APs and UniFi Security Gateways, map out networks, quickly manage system traffic, and provision additional UniFi devices.

Network Overview

A comprehensive overview of your Network Health is readily available in the new dashboard. Monitor your network's vitals and make on-the-fly adjustments as needed.

Detailed Analytics

Use the configurable reporting and analytics to monitor large user groups and expedite troubleshooting. Advanced search and sorting capabilities make network management more efficient.

Multi-Site Management

A single UniFi Controller running in the cloud can manage multiple sites: multiple, distributed deployments and multi-tenancy for managed service providers. Each site is logically separated and has its own configuration, maps, statistics, guest portal, and administrator read/write and read-only accounts.

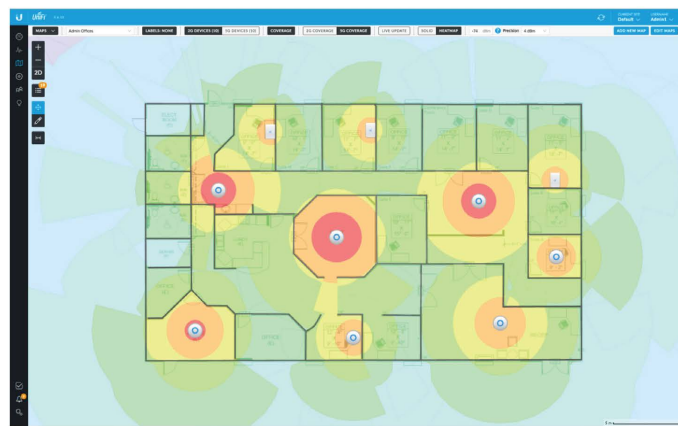
LAN/WLAN Groups

The UniFi Controller can manage flexible configurations of large deployments. Create multiple LAN and WLAN groups and assign them to the respective UniFi devices.



Dashboard

UniFi provides a visual representation of your network's status and delivers basic information about each network segment.



Maps

Upload a map of your location(s) or use Google Maps to represent the areas where your UniFi devices are located. Starting with v5.6.x, you can also use the predictive map feature to get a preview of coverage, so you can help avoid dead spots.

DEVICE NAME	IP ADDRESS	STATUS	MODEL	VERSION	UPTIME	ACTIONS
Rack USG Pro-4	192.168.1.1	CONNECTED	UniFi Security Gateway AP	4.3.11.0822027	34 55h 45s	LOCATE RESTART
Appr-US-16-120W	192.168.1.233	CONNECTED	UniFi Switch 16 POC-120W	3.5.1.4000	109 28h 45m 7s	LOCATE RESTART
Device001-US-48-300W	192.168.1.191	CONNECTED	UniFi Switch 48 POC-300W	3.5.1.4000	46 22h 55m 15s	LOCATE RESTART
Workshop-US-48-750W	192.168.1.246	CONNECTED	UniFi Switch 48 POC-750W	3.5.1.4000	32 22h 32m 13s	LOCATE RESTART
Rack US-48-750W	192.168.1.9	CONNECTED	UniFi Switch 48 POC-750W	3.5.1.4000	44 22h 55m 27s	LOCATE RESTART
PoolArea1-US-8-120W	192.168.1.204	CONNECTED	UniFi Switch 8 POC-120W	3.5.1.4000	16 09h 20m 17s	LOCATE RESTART
AC-Browser	192.168.1.201	CONNECTED	UniFi Switch 8 POC-120W	3.5.1.4000	44 22h 55m 4s	LOCATE RESTART
AC-LITE	192.168.1.162	CONNECTED	UniFi Switch 8 POC-120W	3.5.1.4000	34 22h 37m 32s	LOCATE RESTART
AC-UR-Beamer	192.168.1.137	CONNECTED	UniFi Switch 8 POC-120W	3.5.1.4000	44 22h 54m 4s	LOCATE RESTART
44-0h-07-00-0433	192.168.1.197	CONNECTED	UniFi Switch 8 POC-120W	3.5.1.4000	34 22h 3m 32s	LOCATE RESTART
44-0h-07-00-0444	192.168.1.196	CONNECTED	UniFi Switch 8 POC-120W	3.5.1.4000	34 22h 26m 8s	LOCATE RESTART
AC-Pro-Beamer	192.168.1.7	CONNECTED	UniFi Switch 8 POC-120W	3.5.1.4000	44 22h 53m 31s	LOCATE RESTART
44-0h-07-00-0495	192.168.1.200	CONNECTED	UniFi Switch 8 POC-120W	3.5.1.4000	44 22h 53m 44s	LOCATE RESTART
Protago1-UAP-AC-Pro	192.168.1.182	CONNECTED	UniFi AP-Pro	3.5.1.4000	16 09h 12s	LOCATE RESTART
AC-Pro-Coverance	192.168.1.124	CONNECTED	UniFi AP-Pro	3.5.1.4000	34 22h 37m 14s	LOCATE RESTART
Tencent	192.168.1.235	CONNECTED	UniFi AP-Pro	3.5.1.4000	16 09h 1m 54s	LOCATE RESTART
Living	192.168.1.136	CONNECTED	UniFi AP-Pro	3.5.1.4000	16 09h 30s	LOCATE RESTART
360ip	192.168.1.124	CONNECTED	UniFi AP-Pro	3.5.1.4000	16 09h 1m 54s	LOCATE RESTART
Master	192.168.1.136	CONNECTED	UniFi AP-Pro	3.5.1.4000	16 09h 30s	LOCATE RESTART
LAP1	192.168.1.139	CONNECTED	UniFi AP-Pro	3.5.1.4000	16 09h 4m 25s	LOCATE RESTART
Beamer	192.168.1.140	CONNECTED	UniFi AP-Pro	3.5.1.4000	16 09h 4m 25s	LOCATE RESTART
24-0h-34-84-27-08	192.168.1.122	CONNECTED	UniFi AP-Pro	3.5.1.4000	16 09h 22m 14s	LOCATE RESTART
Pro-tagant2	192.168.1.184	CONNECTED	UniFi AP-Pro	3.5.1.4000	16 09h 20m 21s	LOCATE RESTART
Pro-tagant1	192.168.1.141	CONNECTED	UniFi AP-Pro	3.5.1.4000	34 22h 36m 49s	LOCATE RESTART

Device Configuration

The *Devices* screen displays a list of UniFi devices discovered by the UniFi Controller. You can access each managed device for device details and configuration.

UniFi® SECURITY GATEWAY PRO

Model: USG-PRO-4

The USG-PRO-4 offers optional SFP ports for fiber connectivity to support backhaul applications.

- (2) 10/100/1000 RJ45 LAN Ports
- (2) 1 Gbps RJ45/SFP Combination WAN Ports*
- (1) RJ45 Serial Console Port
- Rack-Mounting Capability
- Layer 3 Forwarding Performance
 - Packet Size of 64 Bytes: 2,400,000 pps
 - Packet Size of 512 Bytes or Larger: 4 Gbps (Line Rate)

* The USG-PRO-4 WAN port, as a result of being a combination SFP/GigE port, is a pure 1 Gbps port – it is incapable of both 10 Mbps and 100 Mbps FDX/HDX settings.



Front Panel



Back Panel

Specifications

UniFi USG-PRO-4	
Dimensions	484 x 44 x 164 mm (19.06 x 1.73 x 6.46")
Weight	2.3 kg (5.07 lb)
Max. Power Consumption	40W
Power Supply	Internal AC/DC Power Adapter, 60W (24V, 2.5A)
Power Input	110 - 240VAC
LEDs System Data Ports	Status Speed/Link/Activity
Networking Interfaces Serial Console Port Data Ports	(1) RJ45 Serial Port (2) 10/100/1000 RJ45 LAN Ports (2) 1 Gbps RJ45/SFP Combination WAN Ports
Layer 3 Forwarding Performance Packet Size: 64 Bytes Packet Size: 512 Bytes or Larger	2,400,000 pps 4 Gbps (Line Rate)
Processor	Dual-Core 1 GHz, MIPS64 with Hardware Acceleration for Packet Processing
System Memory	2 GB DDR3 RAM
On-Board Flash Storage	4 GB
Certifications	CE, FCC, IC
Rackmount	Yes
Operating Temperature	-10 to 45° C (14 to 113° F)
Operating Humidity	10 to 90% Noncondensing

