



Make It Yours.

MasterAir MA620P



The MasterAir MA620P is built for extreme cooling performance. Based on the legendary Hyper 212 heatsink but with the twin tower design, the heat dissipation power and performance have doubled. With six heatpipes and Continuous Direct Contact Technology 2.0 (CDC 2.0), this is an engineering masterpiece. Two MasterFan MF120R RGB make it not only silent and effective in heat transfer, but also the most vibrant and exciting option when it comes to CPU air cooler. It is perfect for multi-graphic platforms and overclocking. If you are looking for an exceptional air cooler that delivers great performance, silence, and fun RGB lighting, the MasterAir MA620P is for you.

Features

Twin-Tower Design - Based on the highly regarded Hyper 212 heatsink design with double the heat dissipation power.

Exceptional Performance - With 6 heatpipes and Continuous Direct Contact Technology 2.0 (CDC 2.0), the contact surface area of heatpipes to cooler base is increased by 45%. This further enhances the heat transfer mechanism and significantly improves conductance and cooling capability.

Custom Colors - With two MasterFan MF120R RGB fans, the MasterAir MA620P is ready for more than 16.7 million color options and tons of fun effects.

Wired RGB Controller C10L - Even without an RGB capable motherboard, the included controller allows customizable colors, brightness and effects for the fans without the need for software.

Silent Cooling - Make no compromise between silence and performance with exclusive noise reduction design and technology.

Specifications & Packing Information

Product Name	MasterAir MA620P
Product Number	MAP-D6PN-218PC-R1
CPU socket*	Intel® LGA 2066/ 2011-v3/ 2011/ 1366/ 1156/ 1155/ 1151/ 1150/ 775 AMD® AM4/ AM3+/ AM3/ AM2+/ AM2/ FM2+/ FM2/ FM1/
Heat Sink Dimensions	116 x 110.1 x 158.4 mm (4.6 x 4.3 x 6.2 inch)
Heat Sink Material	6 Heatpipes / CDC 2.0 / Aluminum Fins
Heat Sink weight	850 g (1.87 lb.)
Heat Pipe Dimensions	Ø6 mm
Fan Dimensions	120 x 120 x 25 mm (4.7 x 4.7 x 1 inch)
Fan Speed	600-1800 RPM (PWM) ± 10%
Fan Air Flow	53.4 CFM±10%
Fan Air Pressure	1.65mm H ₂ O ± 10%
Fan MTTF	160,000 hours
LED color	RGB
Fan Noise Level	31 dBA (Max)
Fan Connector	4-Pin (PWM)
Fan Rated Voltage	12 VDC
Fan Rated Current	0.30 A
Fan Safety Current	0.37 A
Fan Power Consumption	3.6 W
Warranty	2 years

EAN Code	4719512065365
UPC Code	884102037887
Net weight (Kg)	1.31
Gross weight (Kg)	1.57
Package Dimension (L x W x H)	17.3 x 15.8 x 23 cm
Carton Dimension (L x W x H)	49.7 x 36.5 x 26.5 cm
Unit/ Caron	6 pcs

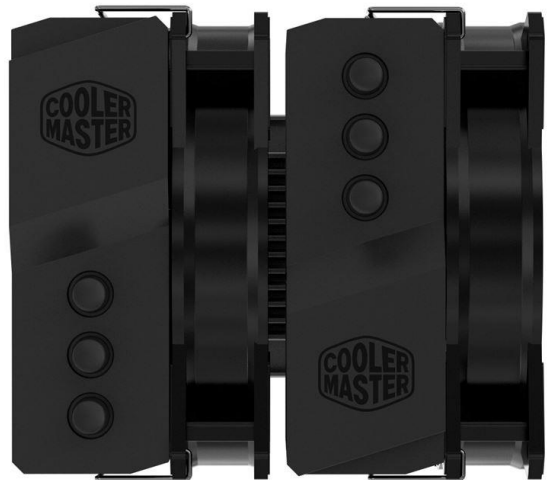
Cont.	W/ Pallet	Carton/ Pallet	W/O Pallet
20'	2520	20'	N/A
40'	5040	40'	N/A
40 HQ	5760	40 HQ	N/A
45 HQ	6336	45 HQ	N/A

Key Features



- Two MasterFan MF120R RGB **Certified compatible** with top RGB capable motherboards.

- **Wired RGB Controller C10L** included, no software required
- Brightness button – 5 levels of brightness.
- Color button – Switch between 7 different colors with just a touch of the button.
- Mode button – 6 pre-set effects.



- **Continuous Direct Contact 2.0 (CDC 2.0)**
6 heatpipes with Continuous Direct Contact Technology 2.0 (CDC 2.0), the contact surface area is increased by 45%.

- Twin-Tower heatsink doubles the performance with aesthetic top cover design.