



Make It Yours.

# HYPER 212 ARGB

RR-2V2L-18PA-R1



## FEATURES

**SickleFlow 120 ARGB Fan** - Redesigned curved blades and frame optimizes airflow and air pressure

**Direct Contact Technology** - Direct Contact Technology using 4 copper heat pipes delivers exceptional heat dissipation

**Quiet Operation** - Performance silent fan with minimized vibrations provides noiseless operation

**Precise Combination of Air Flow and Heatsink** - Stacked-fin array provides low airflow resistance allowing cooler air flow through the heatsink

**Mini Addressable RGB LED Controller** - Included Mini ARGB controller gives you versatility to showcase your favorite color arrays

## Iconic Performance with ARGB Vibrance

The Hyper 212 ARGB delivers both optimal balance of airflow and performance with the vibrant lighting of addressable RGB. The new SickleFlow 120 fan boasts an upgrade fan blade and frame design to enhance cooling capabilities while maintaining silent operation. The heatsink utilizes 4 copper heat pipes and Cooler Master's Direct Contact Technology for extraordinary heat dissipation. The addressable RGB syncs with certified motherboards utilities, with an included Mini Addressable RGB controller to showcase your desired color spectrum.

## SPECIFICATIONS

Product Name		Hyper 212 ARGB
Product Number		RR-2V2L-18PA-R1
Exterior Color		Silver & Black
CPU Socket	Intel	LGA 1200 / 1151 / 1150 /1155 / 1156
	AMD	AM4
Heatsink	Dimensions (L x W x H)	120 x 80.5 x 157 mm ( 4.7 x 3.2 x 6.2 inch )
	Material	Copper & Aluminum
	Heat pipes	4
Fan	Dimensions (L x W x H)	120 x 120 x 25 mm (4.7 x 4.7 x 1 inch)
	Quantity (pcs)	1 pc
	LED Type	ARGB
	Speed (RPM)	650 ~ 1800 RPM (PWM) ± 5%
	Airflow (CFM)	62 CFM (Max)
	Noise Level (dBA)	8 ~ 27 dBA
	Pressure (mmH2O)	2.5 mmH2O (Max)
	MTTF	160,000 hours
	Power Connector	4-Pin (PWM)
	Rated Voltage (VDC)	12 VDC
Rated Current (A)	0.15A	
Warranty		2 years

## PACKING INFORMATION

EAN code	4719512110218
UPC code	884102082528
Net weight	0.61 kg
Gross weight	0.76 kg
Package dimension (L x W X H)	160 x 100 x 231 mm
Carton dimension (L x W x H)	515 x 335 x 265 mm
Units/CTN	10

Cont.	W/ Pallet	Carton/ Pallet	W/O Pallet
20'	4800	42	N/A
40'	9600	42	N/A
40 HQ	10800	48	N/A



Make It Yours.

## FEATURES & SYSTEM REQUIREMENTS



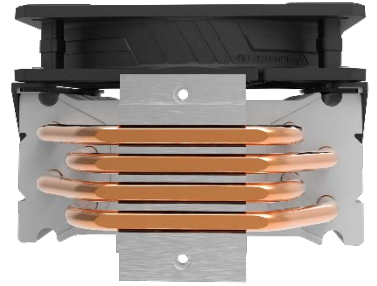
### Mini Addressable RGB LED Controller

Included Mini ARGB controller gives you versatility to showcase your favorite color arrays.



### SickleFlow ARGB Fan

Redesigned curved blades and frame optimizes airflow and static pressure



### Direct Contact Technology

Direct Contact Technology using 4 copper heat pipes delivers exceptional heat dissipation



### Easy installation

Improved universal bracket design simplifies installation process.