



Horn™ 5

5 GHz Beamwidth Horn Antenna

Models: Horn-5-30, Horn-5-45, Horn-5-60, and Horn-5-90

Isolation Antenna Horns for airFiber® LTU and airMAX®

Designed for Increased Co-Location Performance

Dual-Linear Polarization

Overview

Ubiquiti Networks launches a new family of beamwidth isolation horn antennas.

Modular Design

With flexible sectorization for optional antenna beamwidths, the horn antennas are interchangeable and improve beam-shaping for specific deployment and environment needs. Sector horn antennas are designed to increase co-location performance without sacrificing gain.

Scalability

There are two symmetrical horn antennas:

- Horn-5-30: 30° beamwidth
- Horn-5-45: 45° beamwidth

These models offer breakthrough scalability options for wireless systems. Unique beam performance and great co-location characteristics allow for a higher density of sectors than traditional sector technology.

Enhanced Co-Location

There are two asymmetrical horn antennas:

- Horn-5-60: 60° beamwidth
- Horn-5-90: 90° beamwidth

These models have naturally attenuated side lobes and extremely low back radiation. They offer best front-to-back ratio in the industry and the lowest side lobe radiation.

Asymmetrical horn antennas are ideal for cluster sector installations with high co-location requirements.

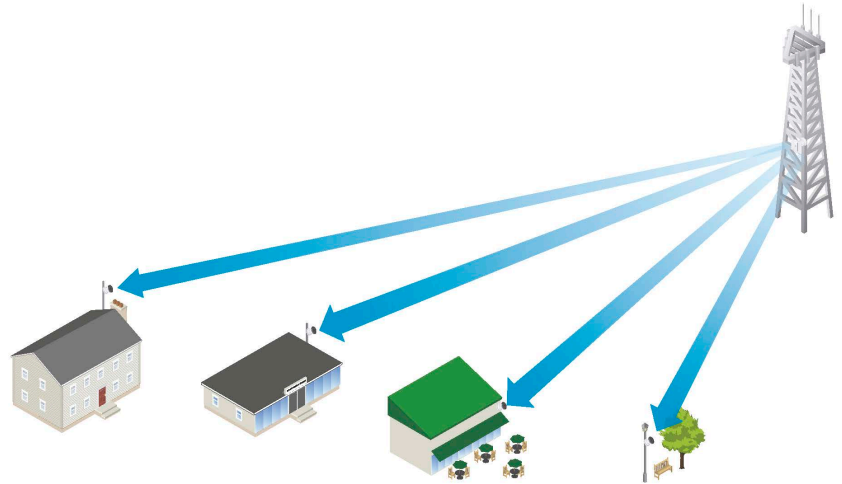
Versatility

The horn antennas can be used with the following radios:

- airFiber LTU™ AF-LTU
- IsoStation IS-5AC
- IsoStation IS-M5
- PrismStation PS-5AC

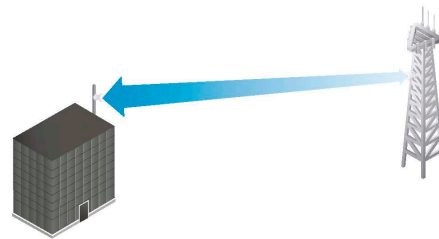
Application Example

PtMP Client Links



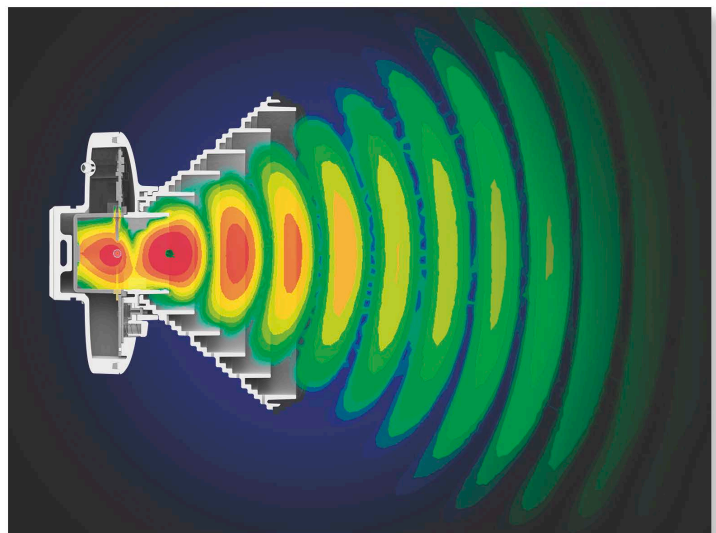
The PrismStation™ 5AC (with a horn antenna) is used as an AP to communicate with the IsoStation™ 5AC for each client in an airMAX PtMP (Point-to-MultiPoint) network.

PtP Link



Use an IsoStation 5AC on each side of a PtP (Point-to-Point) link.

Beam Performance Perfected



Modular Design

The horn antennas come with precise radiation angles for specific beam shaping, ranging from 30° to 90°, making them suitable for a wide range of installations.

- Horn designed for improved beam shaping
- Enhanced co-location performance
- Single button release for ease of changing antennas

Model Comparison



	Horn-5-30	Horn-5-45	Horn-5-60	Horn-5-90
Beamwidth	30°	45°	60°	90°
Gain	19 dBi	15.5 dBi	16 dBi	13 dBi



PS-5AC with Horn-5-45 Mounted on Pole

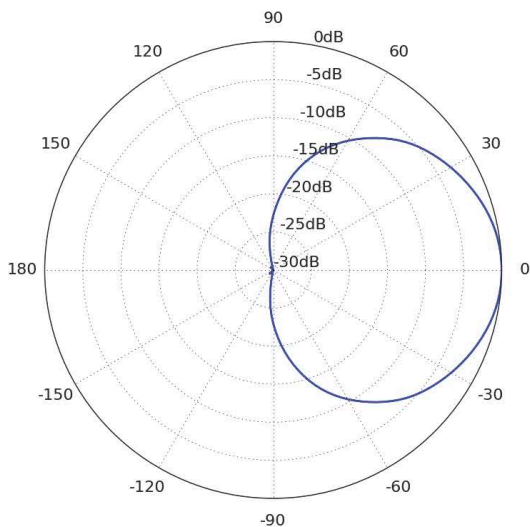
Horn™ 5 90

Specifications

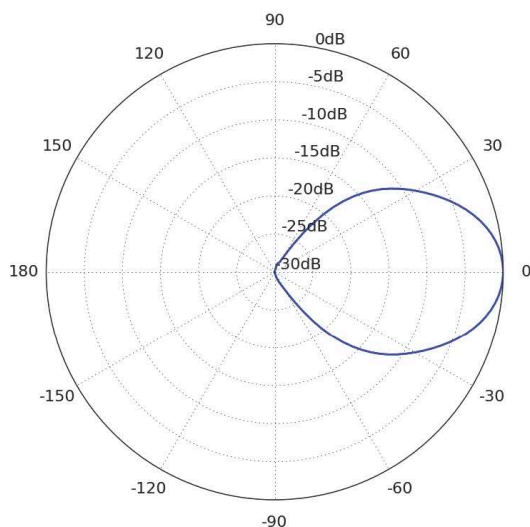
Horn-5-90	
Dimensions	152.1 x 186.8 x 113.2 mm (5.99 x 7.35 x 4.46")
Weight	920 g (32.45 oz)
Supported Frequency Range	5.15 - 5.85 GHz
Gain	13 dBi
HPOL Beamwidth	90°
VPOL Beamwidth	90°
Elevation Beamwidth	45°
Maximum VSWR	2:1
Wind Survivability	200 km/h (125 mph)
Wind Loading	46 N @ 200 km/h (10.3 lbf @ 125 mph)
Polarization	Dual-Linear
Cross-Pol Isolation	17 dB



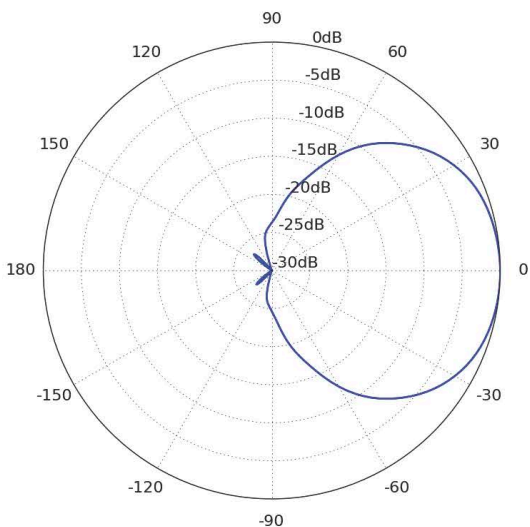
Vertical Azimuth



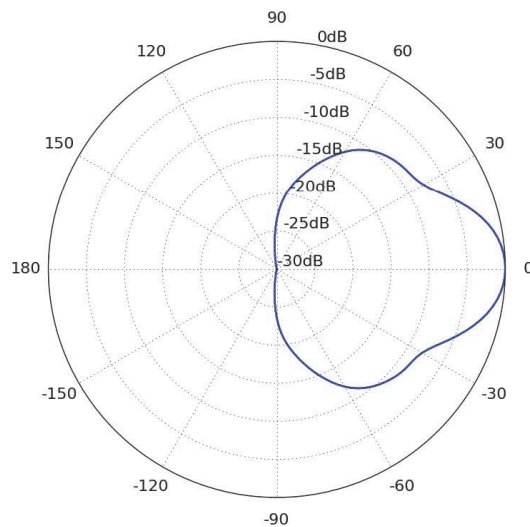
Vertical Elevation



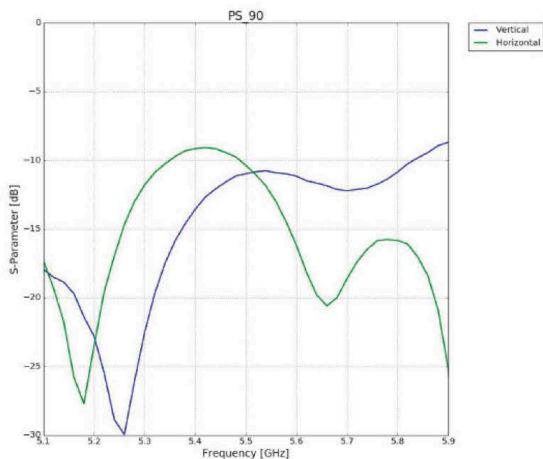
Horizontal Azimuth



Horizontal Elevation



Return Loss



Specifications are subject to change. Ubiquiti products are sold with a limited warranty described at: www.ubnt.com/support/warranty
 ©2017-2018 Ubiquiti Networks, Inc. All rights reserved. Ubiquiti, Ubiquiti Networks, the Ubiquiti U logo, the Ubiquiti beam logo, airFiber, airMAX, airOS, airView, Horn, IsoStation, LTU, and PrismStation are trademarks or registered trademarks of Ubiquiti Networks, Inc. in the United States and in other countries. All other trademarks are the property of their respective owners.